

January Morning Tea - A social event for our church family and friends organized by the AAW. Thursday 5 January 10.00am Alison Heslop 10 Harriet Court Ph. 544 5067 / Thursday 12 January 10.00am Alice Burrough 43 Fairrose Drive Ph. 544 5390 / Thursday 19 January 10.00am Sue Paine 3 Rays Way Ph. 544 0395 / Thursday 26 January 10.00am Anne Webb 19 Otia Drive Ph. 544 7992 Contact the church office or Anne Webb Ph. 544 7992 if you need further information. Look forward to meeting you there.

Baking - 'Tis the season to be jolly – fa la la la ...Do you like to bake? There are several occasions I can think of over this next month for which we would love to have some baking. Sunday 18 December - Messy Christmas / Saturday 24 December - Christmas cake to give away after the service. Please let our office staff know if you are able to help provide something for any of these events

Building Fundraiser - Honey 500gms \$7.00 // 1kg \$13.00 // 2kgs \$25.00 See Anne Askin or Ph. 542 3284

Free Face To Face Counselling At Life Linc Nelson - Feeling sad, stressed, stuck or having relationship issues? Identify and explore new ways to move forward with a Life Linc Nelson Counsellor. Call 03548 2400. Up to 10 Free Face to Face individual or couples counselling sessions.

Work Wanted - Lawnmowing / Garden work. Reasonable rates. Phone Jonathan 544 3972

Church Flower Roster – It's nearly time to draw up our 2017 Roster. At the moment we are 8 (mainly quite elderly) ladies who look after our flowers each week. Would you like to join us? It's very worthwhile helping to keep our church looking beautiful. Please talk to Susan or myself if you are interested. We also badly need a Leader, we haven't had one for a couple of years. Please think about it. Thanks. Brenda Page Ph. 544 5872

Volunteers desperately needed - The Hospice Shop in Bridge Street, Nelson needs volunteers. Volunteers are so sparse that this shop may have to close down on a couple of days a week. Even a few hours work per week would make such a difference and be very welcome. Contact Karen Ph. 543 7017.

Christmas Community Lunch - Richmond Radiyo are on air 6.00am to 10.00pm 107.4FM and they are promoting our Christmas Dinner so please email them to make a request of any kind of Christmas song or carol. Give a time and day, host Lindsay Yeo will do it. Email: studio@richmondradiyo.com

Cafe Connection - The last gathering at The Wooden Spoon cafe for 2016 will be held on Tuesday 20 December 10:30am, not Thursday as usual, see you there, all welcome. Yvonne Smyth

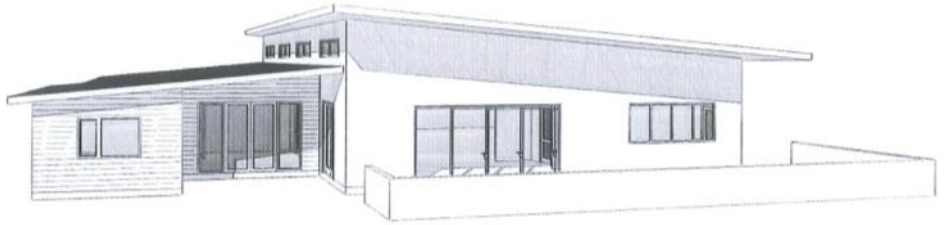
Can You Help - Due to the earthquake a solo mum in Stoke lost all the contents of her freezer which she had stocked for the holiday and festive season. Can you help us re-fill her freezer either with money to go towards a meat voucher or something for the festive season. Please phone Nikki Pritchard 5445314 or 0273789085 or email dpnikki@xtra.co.nz. Thank you.

Missions News - Latest Newsletter from the Corin's is on the Missions Notice Board.

Christmas Shoe Boxes - We've just received a Newsletter from Phillip Haussmann, Christmas Shoe Boxes Organiser from Christchurch. The total sent by South Island this year is 8187 boxes (7200 last year). Well done everyone. Also that helper Lisa from Kaikoura recently emailed him "I have come to realise that possessions mean nothing - it is my love for God that far outweighs it all" What faith. Pray it also may come true for some of the children who receive our boxes. Brenda

Convergence Camp - Family Camp 17-19 February 2017 Bethany Park, Kaiteriteri Intentional Living with Bishop Justin Duckworth Information / Registrations email: convergencecamp@xtra.co.nz

Food Bank - Thank you to all who have given regularly over the year. Even people who budget carefully can be financially stressed by unexpected costs. Gifts of basic non-perishable food stuffs are always welcome and can be left in the basket opposite the Church kitchen. Suitable items are tea, coffee, flour, sugar, pasta, rice, milk powder, breakfast cereals, tinned goods, and biscuits. Pak 'n Save vouchers are also very acceptable. - *Alice Burrough*.



New Building Report

General

- GJ Gardner has been engaged to prepare detailed concept drawings considering various aspects obtained through consultation with parish members and others
- Robin Frengley has agreed to provide his services as structural engineer
- Architect (Premier Services) has been identified who will arrange for detail drawings, fire report and resource consent

Plans

- Received detailed concept plans (see drawings).
- Outdoor stage is considered as part of landscaping. Ideas to be put on paper
- Quotation
- Final quotation after fire report and engineering design
- Working towards to stay within the budget. In case higher we will try to claw back by scrutinizing individual items (use of logs, cheaper options, etc.)

Project Indicative Time - Line

2017

Mid February	Pricing complete
Mid March	Plans complete and into council (depending on engineering)
Mid May	Plans out of council Commence decommissioning of current hall and any earthworks required
Mid June	Commence on site
Mid December	Handover of building

Note: This is all subject to no major holdups, availability of builders to start or variations to plans. All going well could be quicker than this (perhaps by a month or so), just trying to keep it all realistic

**Plans are available for viewing in the Hall Lounge between the 8.45am and 10.45am services today.
Building team members will be on hand to answer any questions**